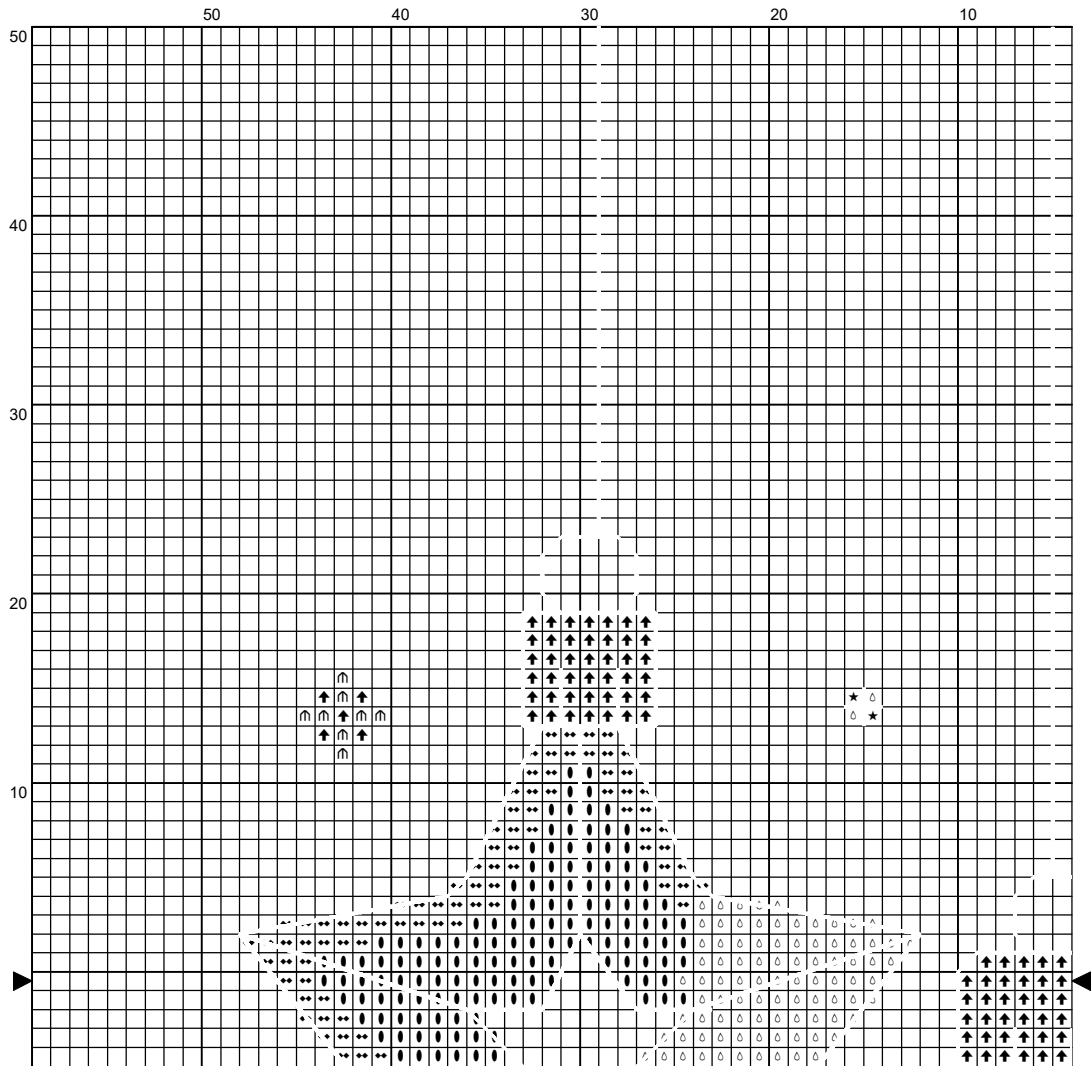
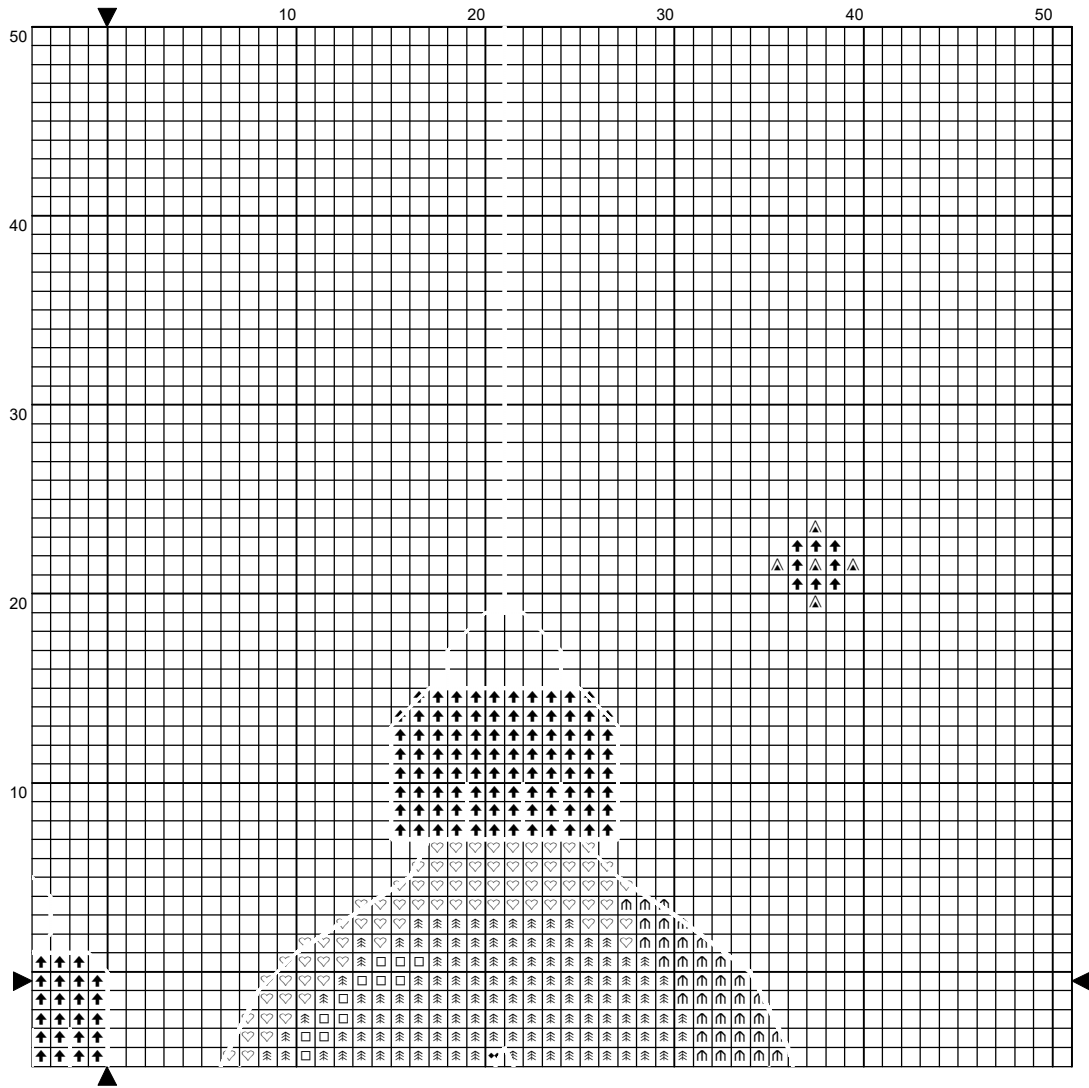


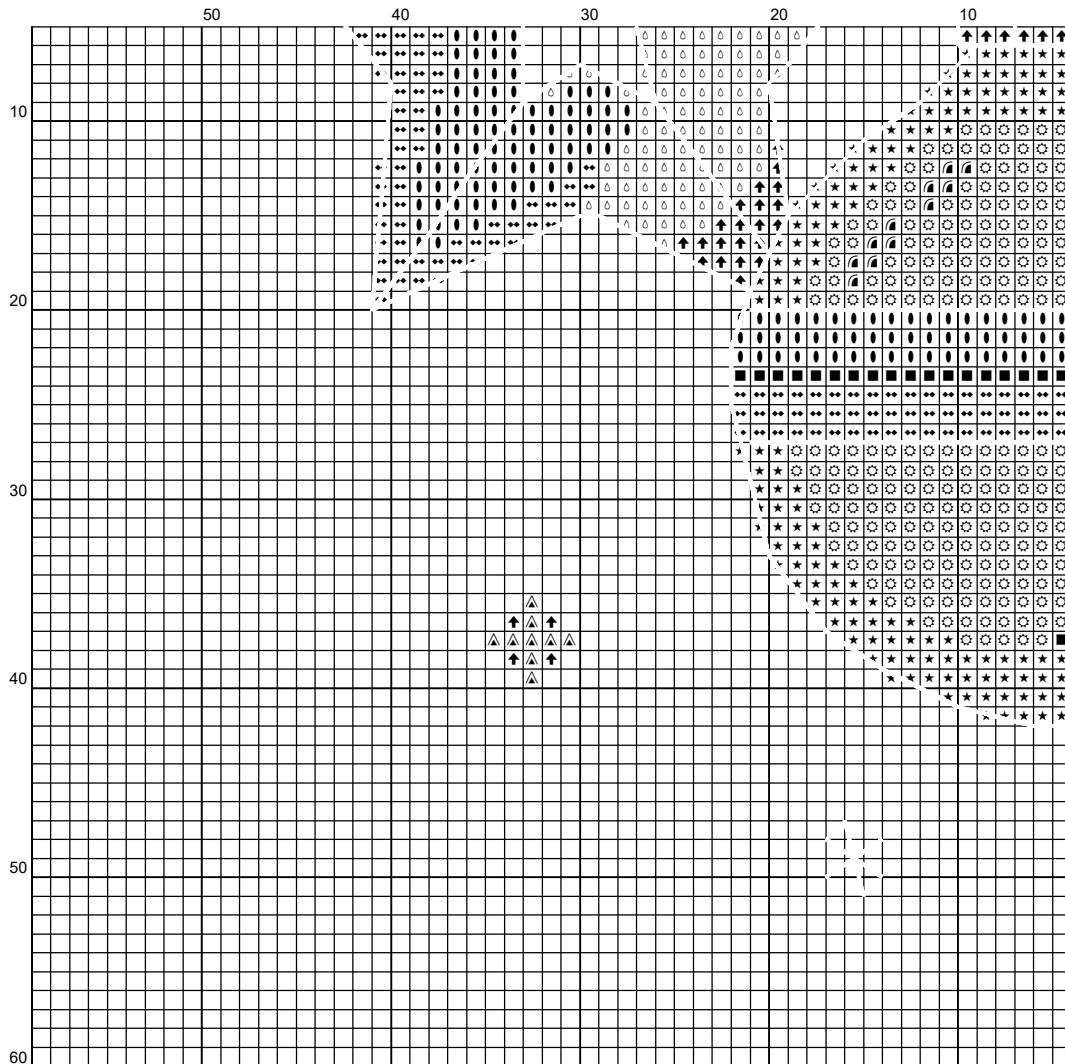
# Christmas Ornaments

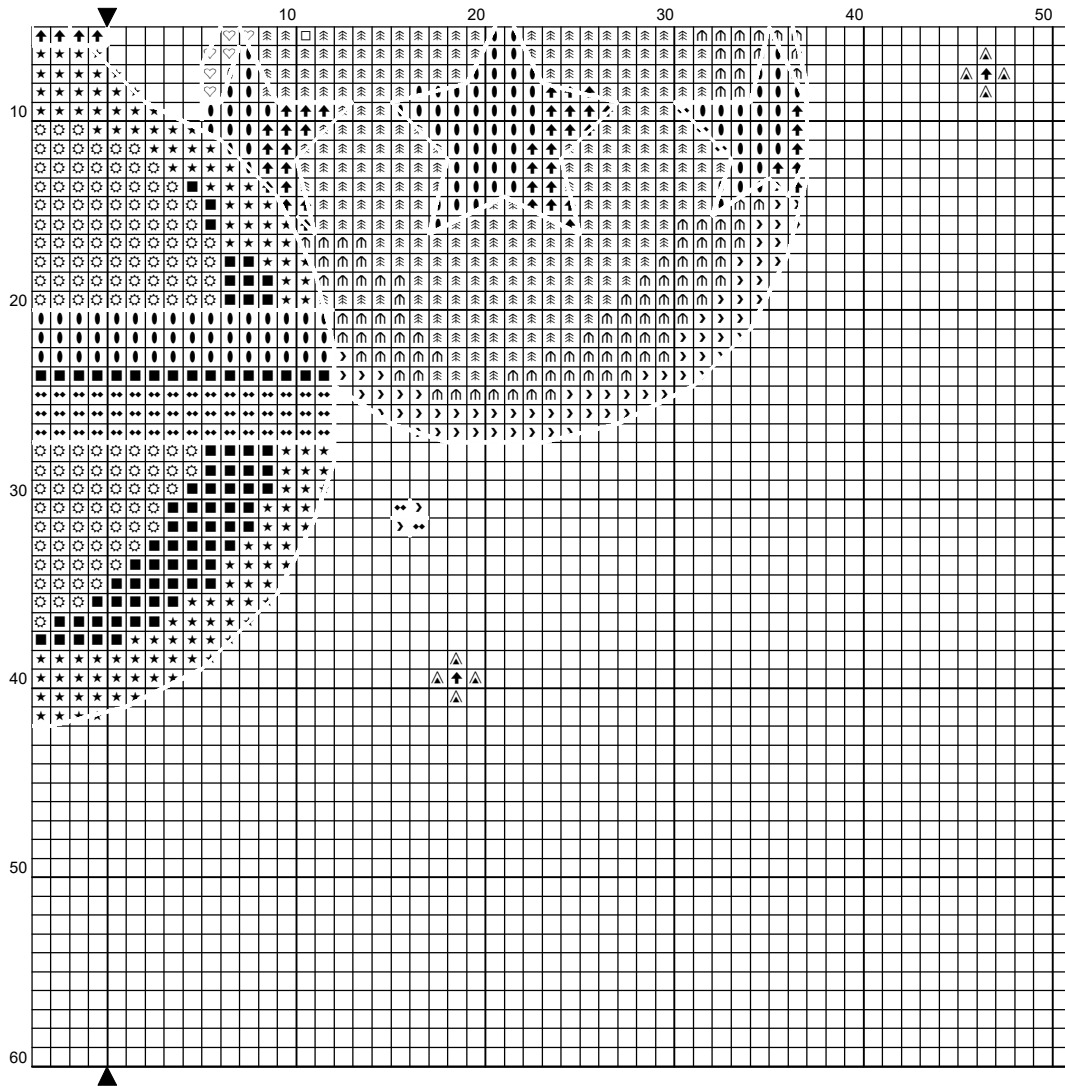


**Design size:** 6.86 x 7.21 inches or 17.42 x 18.32 cm









## Instructions and Symbol Key for Design "Christmas Ornaments"

---

**Fabric:** 14 count White Aida

**Stitches:** 96 x 101                      **Size:** 6.86 x 7.21 inches or 17.42 x 18.32 cm

**Colours:** DMC

Use **2** strands of thread for cross stitch

<u>Sym</u>	<u>No.</u>	<u>Colour Name</u>	<u>Sym</u>	<u>No.</u>	<u>Colour Name</u>
◆◆	307	Lemon	⤴	333	Deep violet
♡	340	Wisteria violet	■	349	Chilli red
⊙	350	Red vermillion	★	351	Coral
◊	743	Medium yellow	△	817	Japanese red
▤	948	Pale peach	↑	972	Curry yellow
●	973	Daffodil yellow	⦿	3746	Iris violet
□	3747	Pale candy blue	➤	3837	Deep violet

Use **1** strand of thread for backstitch

DMC 310

Black

This chart has been designed and printed with our best intentions of being without mistakes. However, the possibility of human error, printing mistakes or the variation of individual stitching does exist, and we regret that we cannot be responsible for this.

Produced using Cross Stitch Professional for Windows [www.dpsoftware.co.uk](http://www.dpsoftware.co.uk)  
Copyright © HooHla Crafts 2020 All rights reserved.